



BEET

MODULAR CONSTRUCTION VS TRADITIONAL CONSTRUCTION



PRESENTET BY

ING. JAN HOLM HANSEN



MODULAR CONSTRUCTION

**SIMULTANEOUS
IN-FACTORY AND
ON-SITE WORK
MAKE MODULAR UP
TO 50% FASTER TO
OCCUPANCY.**

CONSIST QUALITY-
CONTROLLED
MANUFACTURING
PROCESS

MODULES ARRIVE
UP TO 95%
COMPLETE!



TRADITIONAL CONSTRUCTION

**LINEAR
CONSTRUCTION
REQUIRES EVERY
STEP TO BE
COMPLETED BEFORE
THE NEXT CAN BEGIN.**

WEATHER DAMAGE
AND INCONSISTENT
AFFECT QUALITY.

SINCE ALL
CONSTRUCTION
OCCURS ON SITE THE
SCHEDULE IS
DEPENDENT ON
WEATHER
CONDITIONS!



WHAT`S RIGHT FOR YOU?

In the battle for building supremacy, these two distinctly different construction methods often yield indistinguishable results. For many, the battle is lost or won by their ability to deliver quality buildings and Return On Investment (ROI) quickly. Here we hope to let you see which building method is right for you!



WHAT?

MODULAR CONSTRUCTION.

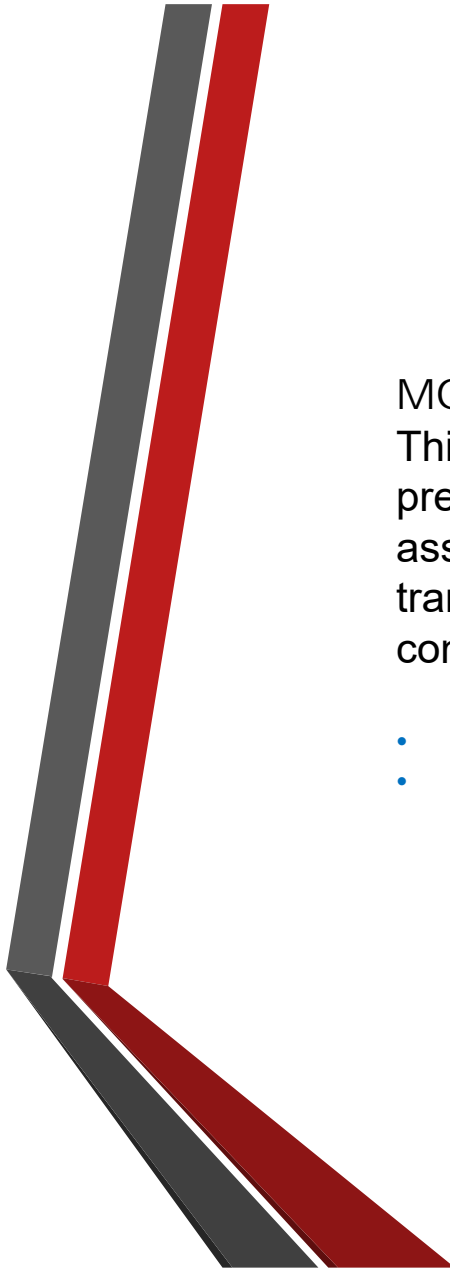
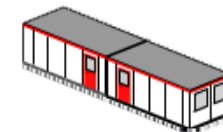
This is a process that uses prefabricated elements that are assembled in a factory and are transported to the site entirely or mostly complete.

- COMPONENT.
- PREFABRICATED MODULE SANDWICH ELEMENTS.

TRADITIONAL CONSTRUCTION.

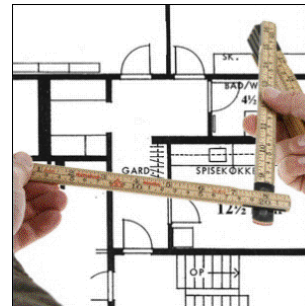
This is a process whose primary structural elements are constructed entirely or largely on-site!

- CONVENTIONAL.
- STICK-BUILT.



WAY?

MODULAR CONSTRUCTION.	TRADITIONAL CONSTRUCTION.
Simultaneous in-factory and on-site work make modular up to 50% faster to occupancy.	Linear construction requires every step to be completed before the next can begin.
Consistent quality-controlled manufacturing process.	Weather damage and inconsistent labour yield can affect quality.
Modules arrive up to 95% complete.	Since all construction occurs on site the schedule is dependent on weather conditions.

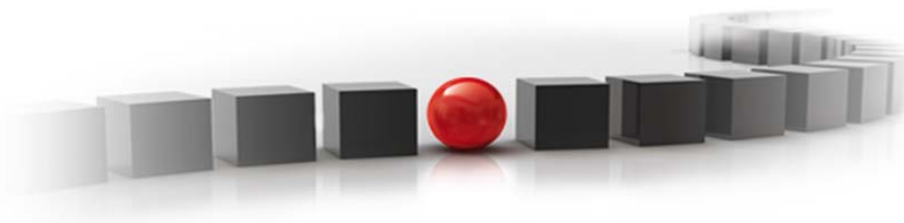


A large, stylized graphic on the left side of the slide, consisting of two parallel lines that form a large 'L' shape. The top line is dark grey and the bottom line is dark red, with a thin white line separating them.

HOW?

DESIGN/ENGINEERING, PERMITS AND APPROVALS, SITE DEVELOPMENT!

Both modular and traditional projects start the same way.
However, once the projects are ready to break ground, the two take dramatically different approaches.



DAY 1



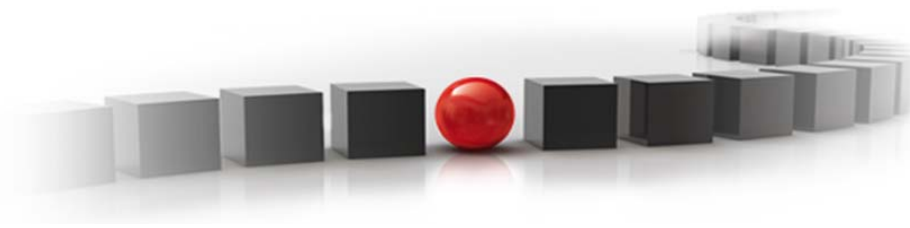
MODULAR CONSTRUCTION.

Grading and Site Preparation




TRADITIONAL CONSTRUCTION

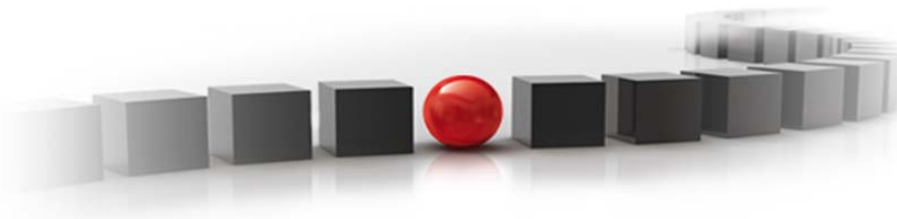
Grading and Site Preparation



DAY 10



MODULAR CONSTRUCTION.	TRADITIONAL CONSTRUCTION
Foundation Construction Begins	Foundation Construction Begins
Start Building Sandwich Modules	 A photograph showing the silhouettes of construction workers on a site at sunset. A crane is visible in the background against the bright orange and yellow sky.
Construction begins in the factory at the same time the foundation is being constructed on site. Weather & and vandalism have almost no impact on the schedule.	



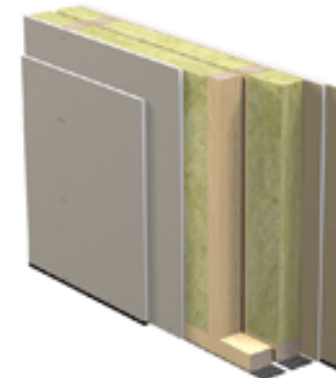
DAY 40

MODULAR CONSTRUCTION	TRADITIONAL CONSTRUCTION
Foundation Complete	Foundation Complete
Start shipping Sandwich Modules	
Modules are shipped up to 95 % complete and include interior & exterior finishes.	



DAY 45

MODULAR CONSTRUCTION	TRADITIONAL CONSTRUCTION
Start setting Modules	Framing Begins.
Modular buildings are treated as traditional and must follow country and local zoning and code regulations.	



DAY 55



MODULAR CONSTRUCTION	TRADITIONAL CONSTRUCTION
Roofing is done.	Framing Begins.
Plumbing and electrical work start.	



DAY 65



MODULAR CONSTRUCTION	TRADITIONAL CONSTRUCTION
Roofing is done.	Framing Begins.
Interior Equipment and Furnishings Starts.	Roofing, Siding, Insulation starts.
Exterior wall work Finish.	



DAY 80

MODULAR CONSTRUCTION

Site clean-up.
Landscaping.



TRADITIONAL CONSTRUCTION

Install windows.
Install doors.

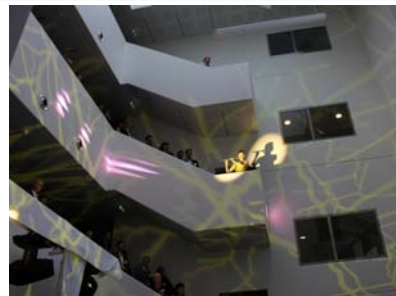


DAY 90

MODULAR CONSTRUCTION

Grand Opening!

Appearances can be same as any traditional site built building. Once completed there is no visible difference between modular and traditional buildings!



TRADITIONAL CONSTRUCTION

Rough electrical and plumbing.



DAY 115



MODULAR CONSTRUCTION

Open for business 155 days.



TRADITIONAL CONSTRUCTION

Interior / Exterior Finishes



DAY 135

MODULAR CONSTRUCTION

Open for business 135 days.

TRADITIONAL CONSTRUCTION

Finish Interior / Exterior Finishes

Finish Electrical and plumbing



DAY 155

MODULAR CONSTRUCTION

Open for business 155 days.



TRADITIONAL CONSTRUCTION

Finish Trim and Touch Ups.



DAY 170

MODULAR CONSTRUCTION	TRADITIONAL CONSTRUCTION
Open for business 170 days.	Site Clean-up and Landscaping
With up to 50% time savings over traditional construction and an average construction time of 180 days, modular building accelerates your return on investment!	



DAY 180



MODULAR CONSTRUCTION	TRADITIONAL CONSTRUCTION
Open for business 180 days.	Grand Opening!
90 days of ROI!	



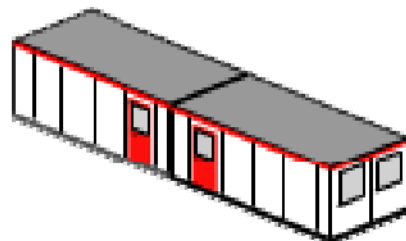


FAST FACT

66% of firms who currently use modular experience reduces project schedules, with 35% experiencing decreases of four weeks or more!



Thank you for your attention.



BEET BUILDING SYSTEM

ING. JAN HOLM HANSEN AS

www.beet.no

E-mail: post@beet.no

